

# STEP 2010 MECOFOHM



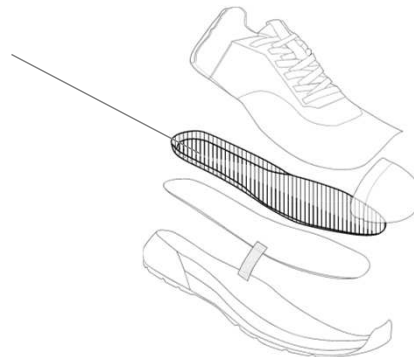
conductive Fabric + Memory latex foam, designed for safety shoes insoles

Breathable fabric with stainless steel yarn for a permanent **conductivity**.  
The **cushion controlled**, also called "shape memory" enabling to exercise an equal elastic thrust on the whole foot surface.

During the use of the shoe, the insole is molded taking the shape of the foot.  
Treated by **TEChom** (Electro Conductive Treatment) to discharge electrostatic electricity in environment at the 12% of **relative humidity**, in accordance with the ESD standard (CEI EN 61340-5-1:2016).

The **breathability** is ensured by the typical open cell structure of the latex, which also allows the **absorption** of moisture of the skin and subsequent desorption.

## ESD conductive



	TEST	UNITS	STANDARD	TYPICAL VALUES
	<b>weight</b>	gr/m <sup>2</sup>	UNI EN ISO 2286-2	1160
	<b>thickness</b>	mm	DIN 53855	4,50
	<b>density</b>	kg/m <sup>3</sup>		250
	<b>roll width</b>	cm		150
	<b>eletrrical resistance</b>	Ohm	EN ISO 20344	<1x10 <sup>5</sup>
	<b>relative humidity</b>	%		12

0,5 % Steel  
20,0 % Polyester  
79,5 % Synthetic Latex

*The mentioned data are average values resulted on standard products of ours. The results are obtained either by own Laboratory or by Official Laboratories and they follow both internal and international Standard Norms. They are typical and strictly confidential data*